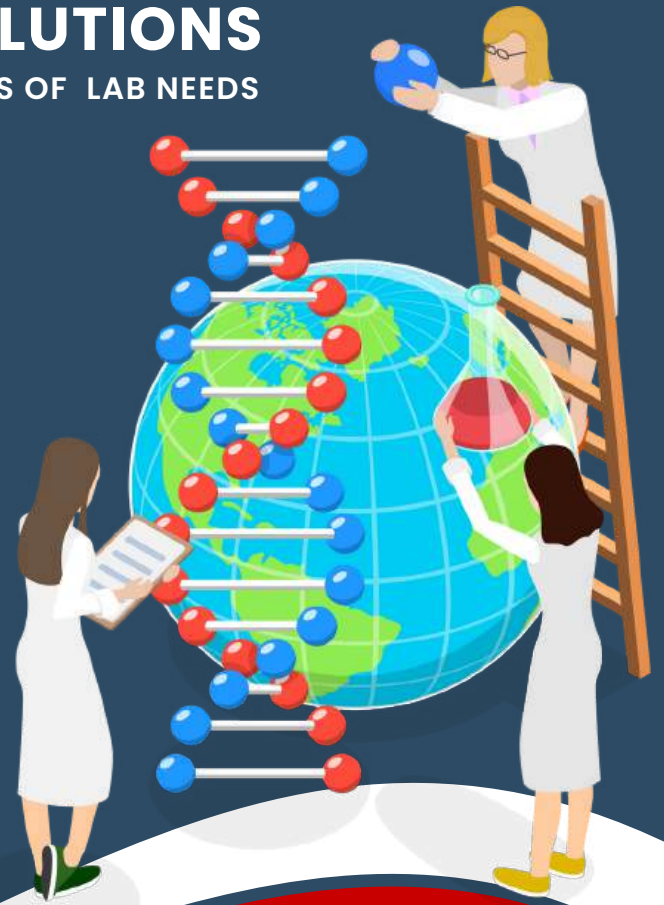




# YSP SCIENTIFIC SOLUTIONS

ONE STOP SOLUTIONS FOR ALL TYPES OF LAB NEEDS



**LABORAX**



**ELECTRONICS**

For More Information  
[yspscientific@gmail.com](mailto:yspscientific@gmail.com)



# BRANDS ASSOCIATED



## HM DIGITAL

- Pen type Meters [
- pH/TDS/EC/ORP/SALT ] Online
- Controllers Buffer Solutions
- Refractometer Best suitable for
- the Water Industry USP: Korean
- Make [ 1 Year Warranty ]



## SARTORIUS

- Measuring Balance Moisture
- Balance Filter Paper [
- Membranes, Filter Papers ]
- Micropipette [ Fixed & Variable ]
- Water System
- Syringe Filters



## ATAGO

- Frying Oil Monitor
- Refractometer High End
- JAPAN Originated



## EUTECH - THERMO SCIENTIFIC

- Benchtop Meter [ pH/TDS/EC/TURBIDITY/DO ]
- Pen type Meter
- Portable Meter
- Buffer solutions NIST Traceable
- Electrode's
- Consumables
- IQ\OQ\PQ : Certification Available



## ELECTRONICS INDIA

- pH
- TDS
- COND
- Colorimeter
- Colony Counter
- Turbidity
- Pontentiometer



General Lab Equipme



## HAMILTON

- GLASS SYRINGES
- DIGITAL SYRINGE
- DISPENSERS BUFFER
- SOLUTION HPLC
- SYRINGES



## REMI

- CENTRIFUGE [ Cooling & Regular ]
- Mechanical & Magnetic Shakers
- Rotary Shakers
- Cold Cabinets
- Deep Freezers



## BLUE STAR / ROHEM / HBG

- COVER GLASS
- MICROSLIDES [ Frosted / Regular ]
- Cavity Slides
- Counting Chambers
- Heamometer
- Hemocytometer



## AQUASOL DIGITAL

- Test Kits [ For all Parameters ]
- Indian Standard Buffer at Low Cost
- COD Digester & Meter
- Pen Type Tester
- Bench Top



## TESTO . BE SURE.

- Frying Oil Tester
- Smart Probes
- Thermal Image Camera
- Data logger & Monitoring
- Temperature Measuring



## LUTRON

- Co2 / O2 Meter
- Lux Meter
- Vibration Meter
- Soil Moisture
- meter pH Meter
- Turbidity Meter





## CYTIVA WHATMAN

- Lab Filtration
- Cellulose Filter Paper
- Syringe Filter
- Membranes
- Thimbles



## ERMA - OCTOLINE

- Refractometer
- Brass / Aluminum Body



## MERCK

- MF-Millipore™ Membrane Filter
- Mixed cellulose esters (MCE)
- PVDF / PTFE / CA / CN
- pH Papers [ 1-14 / 2-10 ]



## METTLER - TOLEDO

- pH Meter & Conductivity Meter
- Benchtop Analytical Balance Moisture
- Balance
- Consumables



## OCTO LINE

- Refractometer
- Test Sieves With CC
- Thimbles
- Filter Paper: Ordinary
- Syringe Filter
- Human Models Imported



## OCTO VISION

- Microscope: Export Quality
- Glass Thermometer
- Benchtop Meter
- Hand-Held Pen Type Meter
- Electrodes & Consumables





## HANNA INSTRUMENTS

- Benchtop Meter [ pH/TDS/EC/TURBIDITY/DO]
- Pen type Meter
- Portable Meter
- Buffer solutions NIST Traceable
- Electrodes
- Consumables



## MITUTOYO / INSIZE

- Vernier Caliper
- Screw Gauge / Micro Meter
- Surface Hardness Tester
- Various Testing Instruments



←INSIZE→



## JAYANT / OCTOLINE TEST SIEVES

- Test Sieves [ Brass / S.S ]
- Available in: 4" / 7.75" / 8" / 12" Inches
- Sieve Shaker: RO-TAP / Table Model & Electronic Sieve Shaker
- With Certificate on Request



## R-TEK

- Alcohol Analyzer
- Data Logger
- Air Quality + Pollution Meter
- Th/Hygro / Contact / Non-Contact Meters
- NDT & Testing Instruments
- Moisture Measuring Tools



## HORIBA

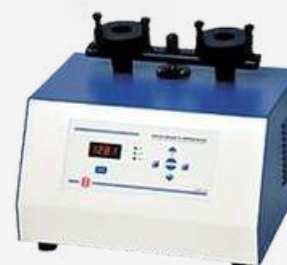
- Unique measurement options With LAQUAtwin



## ELECTRONICS INDIA

- Bulk Density Apparatus
- Powder Flow Meter
- Dissolution / Disintegration Apparatus
- Friability Tester
- Melting Point Apparatus

## Pharma Lab Equipment





## MICROLIT

- Liquid Handling Items:
- Micropipette [ Fixed & Variable ]
- Bottle Top Dispensers
- Multi-Channel Pipettes
- Aqua Digital Series
- Micropipette Stand



## LABOMED

- Industrial Microscopes
- Medical Microscopes
- Laboratory Microscopes
- Imaging Devices
- Spares : Eye Pieces & More



## OYLMPLUS - MAGNUS

- Industrial Microscopes
- Medical Microscopes
- Laboratory Microscopes
- Imaging Devices
- Spare Parts: Eye Pieces & More



## SHIMADZU

- UV-VIS Spectrophotometer
- Liquid Chromatography
- Life Science Lab Instruments
- Gas Chromatography
- Balances



## DIMPLE / ZEAL

- Wet & Dry Thermometer
- Glass Thermometer
- Urino meter
- Max - Min
- Hydrometers



## PALL

- Lab Filtration
- Cellulose Filter
- Paper Syringe Filter
- Nylon Membranes



**PH METER**

- 2-20 / 1-14 pH
- Microprocessor
- With - Stirrer 5 -
- Point Calibration 3
- -Point Calibration

**Alpha 01, 111, 111+ 101, 1016,  
1015, 1012, 1013, 1010**

**TDS METER**

- 0-200ppm / 2ppt /  
20ppt / 1000ppt
- Microprocessor 5 -
- Range
- 3 -Range

**Alpha 05, 651, 652,  
1601, 1602**



**CONDUCTIVITY**

- 0-20, 0-200  $\mu$ S 0-2, 0-20,  
0-200 mS
- Microprocessor /  $\mu$ P Based
- With - Stirrer
- ATC Cell C Adjustments

**Alpha 06, 601, 602, 611, 611+  
641, 1601, 1602**

**TURBIDITY /  
NEPHELOMETER**

- Digital Turbidity meter
- 4/2 Split ranges 0- 1000  
NTU

**331 E, 341 E, 335E**



**POTENTIOMETERS**

- 0 - +/1999 MV /  
-1999 - +1999 MV
- Mini Controller / Touch Key
- 4/2 Electrode Options

**118, 119, 120, 121, 122**

**COLORIMETER**

- 400-700 NM 8 Filters / Auto
- Zero Photo /
- Microprocessor Based

**Alpha 03, 312, 1311,  
1312, 1313**



**COLONY COUNTERS**

- Digital Colony Counter
- 3-6 Digit  
(999 / 9999 / 999999 )
- With magnifier & Pen

**361, 362, 363,  
1361, 1362, 1363**

**DRY BATH  
INCUBATOR**

- Thermally conducting  
Block.
- 24 test tubes of 12mm Dia

**352**



**HEAMO  
GLOBINOMETER**

- Haemoglobin  
concentration in sample
- Measuring Range 0 - 30  
gm/dl of Hb.

**368**

**BLOOD CELL  
COUNTER**

- Cell Counting Key 8 Key
- 11 Key (8 Cell keys and 3  
Function keys)

**Alpha 05, 651, 652,  
1601, 1602**





**SPECTROPHOTOMETER  
VISIBLE RANGE**

- Range 340 To 960 nm 3 ½
- Digital Display Highly Stable
- & Accurate 10 mm Path
- Length Direct Concentration
- Facility

301, 302, 304, 305, 1305

**SPECTROPHOTOMETER  
SINGLE BEAM**

- Microprocessor Based
- Auto Zero and Blank
- Printer Attachment Facility
- PC Connectivity through USB

3305, 2305, 2306



**SPECTROPHOTOMETER  
UV-VIS SINGLE BEAM**

- Range 190 To 1000 nm
- 4-Position Cuvette Holder
- 4 Digit Wavelength Display
- Printer Interface

371, 1371

**SPECTROPHOTOMETER  
UV IMPORTED SERIES**

- Automatically Adjust to 0%,100%
- Using 1200/mm High-Performance
- Large Sample Room to Place 50mm Cuvette

3371, 3375, 3385, 2371, 2373  
2375, 2377, 2385, 2395



**NANO  
SPECTROPHOTOMETERS**

- Wide variable wavelength range 200nm - 800nm
- Android OS with 7 inches Touch Screen
- Small sample size of 0.5 - 2µl

4301, 4305

**ATOMIC ABSORPTION  
SPECTROPHOTOMETER**

- Supplied with 4 Hollow Cathode Lamps,
- Compressor, air cooled 100mm Titanium Burner and PC link software

5301



**FLUORIMETER**

- Covers entire visible range
- Determines the concentration of Fluorophors & Quinine

681

**KARL FISHER  
TITRATOR**

- Motorized Dispensing
- External Printer Attachment Facility

1760, 2760



**LEAK TEST  
APPARATUS**

- Ideal for Leak Testing of Strips, Blisters & Sachets
- Dessiccator Sizes ( 6/8/12)

961, 1961

**JAR TEST  
APPARATUS**

- Digital indication of speed and time
- Two pre-set programs

2 Jar (1922) 4 Jar (1924)  
6 Jar (1926)





**MELTING POINT  
APPARATUS**

- Extremely Useful for Pharmaceutical Use Silicon
- Oil-bath and In-built Magnetic Stirrer for Uniform Heating

**1934 , 1935 , 2935 , 934 , 935  
931**

**MULTIPARAMETER**

- pH, Conductivity, TDS, DO Salinity, mV & Temp. Measurements Turbidity
- Measurement (191) Both
- Turbidity & Colorimetric Measurement (172)

**1160 , 191 , 161 , 172 , 641 ,  
181 , 1615 , 1602 , 1611**



**BULK DENSITY/ TAP  
DENSITY**

- Extremely Useful for Pharmaceutical Use Silicon
- Oil-bath and In-built Magnetic Stirrer for Uniform Heating

**951 , 1951**

**POWDER FLOW  
METER**

- Two Pieces Stainless Steel Conical Funnel with 16-Mesh & 1.03mm Opening

**PF 922**



**DISINTEGRATION  
TEST APPARATUS**

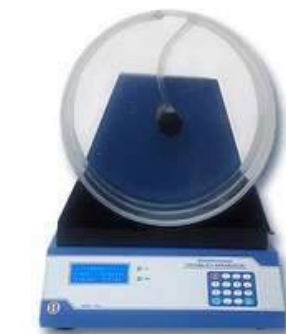
- Microprocessor based, easy to use
- Seven segment LED display
- 10 Soft touch membrane type keys

**901 , 904 , 1901 , 2901**

**TABLET  
DISSOLUTION**

- Extremely useful for pharmaceutical labs Highly
- Accurate and Easy to Operate
- Programmable Stirrer Control

**912 , 1912 , 1916 , 1918 , 2914**



**TABLET FRIABILITY**

- Facility to attach with weighing balance
- Rs232 Printer attachment facility
- Automatically calculates percentage friability

**901 , 904 , 1901 , 2901**

**ELECTROMAGNETIC  
SIEVE SHAKER**

- 2 Tier Password Protection Fully
- Alphanumeric Keyboard Very
- Low Noise Operation Up to 8
- Sieves (Test sieve Dia 200mm x 50mm h)

**918**



**SALINITY BENCH  
MODEL**

- Salinity of aqueous solutions
- Ideal for monitoring salt contents in water and soluble salts in soils.

**671**

**HPLC**

- High pressure Liquid Chromatography (HPLC)

**5001**



## BSA - NON TOUCH SCREEN

**BSA124S-CW**



Capacity : 120 g  
Readability : 0.1 mg / 0.0001  
Internal calibration  
Pan Size 90 mm

**BSA 224S-CW**



Capacity : 220 g  
Readability : 0.1 mg / 0.0001  
Internal calibration  
Pan Size 90 mm

**BSA223S-CW**



Capacity : 220 g  
Readability : 1 mg / 0.001  
Internal calibration  
Pan Size 115 mm

**BSA323S-CW**



Capacity : 320 g  
Readability : 1 mg / 0.001  
Internal calibration  
Pan Size 90 mm

**BSA423S-CW**



Capacity : 420 g  
Readability : 1 mg / 0.001  
Internal calibration  
Pan Size 90 mm

**BSA623S-CW**



Capacity : 620 g  
Readability : 1 mg / 0.001  
Internal calibration  
Pan Size 180 x 180 mm

**BSA2202S-CW**



Capacity : 2200 g  
Readability : 10 mg / 0.01g  
Internal calibration  
Pan Size 180 x 180 mm

**BSA3202S-CW**



Capacity : 3200 g  
Readability : 10 mg / 0.01g  
Internal calibration  
Pan Size 180 x 180 mm

**BSA4202S-CW**



Capacity : 4200 g  
Readability : 10 mg / 0.01g  
Internal calibration  
Pan Size 180 x 180 mm

**BSA6202S-CW**



Capacity : 6200 g  
Readability : 10 mg / 0.01g  
Internal calibration  
Pan Size 180 x 180 mm

## BCE - TOUCH SCREEN

**BCE223I-10IN**



Capacity : 220 g  
Readability : 1 mg / 0.001  
Internal calibration  
Pan Size 120 mm

**BCE224I-10IN**



Capacity : 220 g  
Readability : 0.1 mg / 0.0001  
Internal calibration  
Pan Size 90 mm

**BCE323I-10IN**



Capacity : 320 g  
Readability : 1 mg / 0.001  
Internal calibration  
Pan Size 120 mm

**BCA324I-10IN**



Capacity : 320 g  
Readability : 0.1 mg / 0.0001  
Internal calibration  
Pan Size 90 mm

**BCE623I-10IN**



Capacity : 620 g  
Readability : 1 mg / 0.001  
Internal calibration  
Pan Size 120 mm

**BCE622I-10IN**



Capacity : 620 g  
Readability : 10 mg / 0.01g  
Internal calibration  
Pan Size 182 x 182 mm

**BCE1202I-10IN**



Capacity : 1200 g  
Readability : 10 mg / 0.01g  
Internal calibration  
Pan Size 182 x 182 mm

**BCE2202I-10IN**



Capacity : 2200 g  
Readability : 10 mg / 0.01g  
Internal calibration  
Pan Size 182 x 182 mm

**BCE3202I-10IN**



Capacity : 3200 g  
Readability : 10 mg / 0.01g  
Internal calibration  
Pan Size 182 x 182 mm

**BCE6202I-10IN**



Capacity : 6200 g  
Readability : 10 mg / 0.01g  
Internal calibration  
Pan Size 182 x 182 mm

**PRINTER - YDP20-OCE**  
RS 232 DATA PORT



**YD K 03 DENSITY KIT**



### ADDITIONAL ACCESSORIES

**SS WEIGHTS BOX**



Individual E1, E2, F1, F2 and M1 OIML

**SPARES**



On Request

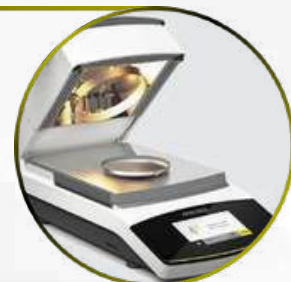


## MA 37 - MOISTURE ANALYZER

- Max. weighing capacity 70 g
- Readability 1 mg, 0.01%
- Typical sample quantity 5 g – 15 g
- Sample heating: Infrared heating using a metal tube heater
- Heating programs: Standard drying, gentle drying
- Shutoff parameters: Fully automatic, semi-automatic, manual and with timer settings

## MA 160 - MOISTURE ANALYZER

- Max. weighing capacity 200 g
- Readability 1 mg, 0.01%
- Typical sample quantity 5 g – 15 g
- Heating programs Standard drying, gentle drying, MA35 mode
- Shutoff parameter Fully automatic, semi-automatic, manual and with timer settings
- Sample heating Infrared heating using an AURI heating unit, 600 W



## TACTA - MICROPIPETTE

- Utilize the advanced innovative single-channel Tacta® Mechanical Pipette, designed for your comfort and to achieve reliable results.
- Top Features of the Tacta® Mechanical Pipette
- Optimized design, ease of use, reliable results
- Superior Ergonomics, clean and maintain
- Popular Applications for Tacta® Mechanical Pipette. Pharmaceutical research

## PROLINE PLUS+ MICROPIPETTE

Proline® Plus combines durable construction with ease and lightness of use, and it is a perfect choice for pipetting professionals and beginners. Proline® Plus offers the widest selection of different models, from Proline® Plus pipettes are easy to clean with only few parts to disassemble and fully autoclavable when sterilization is needed.



## PROLINE - MICROPIPETTE

- Wide range of pipettes, both adjustable and fixed volume available
- Volume range from 0.1 µl (5 µl for fixed) to 5,000 µl
- Relaxed grip with ergonomic finger support.
- Reduced risk of contamination with Safe-Cone Filters available for models above 10 µl
- Cost-efficient, yet practical and reliable.

## WATER SYSTEM

- Arium® Mini Ultrapure Water Systems
- Arium® Pro Ultrapure Water Systems
- Arium® Advance Pure Water System
- Arium® Advance RO Benchtop System
- Ultrapure Water Systems
- Pure Water Systems
- Reverse Osmosis Pure Water Systems
- Combined Water Systems



## THIMBLES

- Cellulose Extraction Thimbles
- Crafted with eco-friendly materials
- Based on high purity Cellulose
- Designed to fit various extractors precisely

## HANNA



Variety of High End Product

## HI 98301 / 98302



- TDS 0 - 2,000 [ Water proof ] HI 98301
- TDS 0 - 10,000 [ Water Proof ] HI 98302

## HI 98303 / 98304



- EC Range: 0 - 2,000  $\mu\text{S/cm}$  HI 98303
- EC Range: 0 - 9999  $\mu\text{S/cm}$  HI 98304

## HI 98129 / 98130



- COMBO : 3 in 1 [ PH/Cond/TDS ]
- 98129 - Low Range / 98130 - High Range

## HI 98107 / 98108



- pH Meter : 1-14 : HI 98107
- pH Meter : 1-14 : HI 98108

## HI 2211-02 : pH /ORP



- pH Range -2.00 to 16.00 pH
- mV Range  $\pm 399.9$  mV ;  $\pm 2000$  mV

## HI 2020 : Edge® Multiparameter



- MULTIPARAMETER : ph/TDS/EC [ Additional probe required ]

## Digital Refractometer



- DIGITAL REFRACTOMETER : ALL RANGES AVAILABLE

## BUFFER SOLUTIONS. REAGENTS . CHECKER . ELECTRODES



## REMI



- Pharma / Industry / Institution Products

## GENERAL CENTRIFUGE



- R - 4 C [ 4400 RPM ]
- R - 8 C [ 5250 RPM ], R - 8 C BL [ 6000 RPM ]

## MAGNETIC STIRRERS



- 500 / 1 / 2 / 5 ML 1 / 2 / 3 RML - Rota Mantel
- 1 / 2 / 5 MLH - With Hot Plate

## MINI CENTRIFUGE



- RM 02 PLUS, RM 03 PLUS
- RM - 12 C

## CYCLOMIXER'S



- CM 101, CM 101 Plus
- VM 100

## LABORATORY STIRRERS



- GENERAL & LABORATORY STIRRERS
- OVER HEAD STIRRERS (Various Capacities)

## NEYA SERIES HIGH END



- High Speed : Cooling Centrifuge
- NEYA 8 / 10 / 12 / 16 / 16R

## HIGH END INSTRUMENT



- Vacuum Oven, Orbital shaking incubator
- Mini Rotary Shaker

## REFRIGERATOR



- Cooling Incubator, Cold Cabinet
- Walk in Chamber, Stability & Humidity Chambers

## SPARES On Request



- Spare Head : Spare Brush

## HM DIGITAL



- High Quality / Low Cost Durable Meter's

## AP : 1



- TDS Range: 0-5000 ppm (mg/L)
- 1 Year Warranty

## TDS : 3



- TDS Range: 0 - 9990 ppm (mg/L)
- 3 Year Warranty

## pH : 80



- pH Range: 0 - 14
- 1 Year Warranty

## pH : 200 PRO SERIES



- pH Range: 0 - 14 [ With Temp ]
- 1 Year Warranty

## COM : 80



- EC Range: 0 - 9990  $\mu\text{S}$ ; 0 - 9.9 mS
- TDS Range: 0 - 5000 ppm (0.5 Scale); 0 - 8560 ppm (0.7 Scale)

## COM : 100 PRO SERIES



- UPGRADED: Four scales:  $\mu\text{S}$ , mS, ppm 0.5 (NaCl) Scale & 0.7 (442") Scale

## COM : 360 PRO SERIES



- 4 in 1 : pH/TDS/EC/TEMP
- Dual Probe

## ORP : 200 PRO SERIES



- ORP Range: -999 to +1000 mV
- 1 Year Warranty

## SAL : 1700 PRO SERIES



- Salinity meter for Aquarium 1 Year Warranty

**LUTRON**



Variety of High End Product

**LUX METER**



• Lux Meter Used to Measure the brightness of the light

**DO METER**



• Do Meter Used to measure the dissolved oxygen levels in bodies of water

**TURBIDITY METER**



• Measures suspended solids in liquids to check water quality

**SOUND LEVEL METER**



• Are used to measure and manage noise

**UV METER**



• Used to detect the intensity of ultraviolet radiation

**ANEMOMETER**



• Measures wind speed and direction

**O2 / CO 2 METER**



• Used to monitor, detect and control the levels of gases

• pH / EC Meter • VIBRATION METER • Soil Moisture • ELECTRODES



• Used for various water quality and environmental measurements

**EUTECH**



World Leader in Water Quality Instruments

**PEN TYPE**



• Pocket testers for pH, EC, TDS, etc

**BENCH TOP MODEL**



• Laboratory requirements at every level

**PORTABLE METER**



• Laboratory requirements at every level

**BUFFER SOLUTION'S**



• PH, EC, COND Buffers (NIST traceable)

**TUTOR SERIES**



• Microprocessor based Table-Top meters

**TURBIDITY METER HIGH END**



• Measures suspended solids in liquids to check water quality

**DO METER**



• Do Meter Used to measure the dissolved oxygen levels in bodies of water

**MULTI-PARA METER**



• pH / mV / Ion / Conductivity / TDS / Salinity / DO / °C / °F

**SPARES On Request**



• Electrodes and other spare parts

**RTEK**



• All Testing / Measuring Equipment at Economical Pricing

**Digital Folding Temp.**



• Ideal for Cooking / Lab / Pharma Uses

**Digital Waterproof Temp.**



• IP 66 Water Resistance : Can Fully Summerge in water

**Infrared Thermometer**



• Economical : Different Range Available

**Digi . Psychrometer**



• Special Testing Products available in this Brand

**Digi. Thermo/Hygro**



• Fully Digital With Touch Screen & Many Normal Models Also Available

**Digi. With Timer**



• Digital with timer Option

**Digi. Fridge thermometer**



• Wall Mount : Temperature Monitor

**METAL DETECTOR**



• Recharge Facility  
• With Carrying Case

**P Series Low Cost**



• pH/TDS/EC/COND : Multiparameter's  
• 98107 / 98301 / 98302 / 98303 / 98304

# GENERAL PRODUCTS



**FLOW CUP**



**SLIT ROD**



**SYRINGE FILTER**



**IR THERMOMETER**



**WET & DRY**



**ALCOHOL TESTER**



**CAPILLARY**



**PRISM**



**ESRILITE KIT**



**PETRI DISH**



**CRUCIBLE**



**TIPS**



**PETROLEUM  
PRODUCT**



**AGATE**



**GLOVES**



**S.WATCH / CLOCK**



**SV / UV LAMP**



**HOT AIR OVEN**



**MUFFLE FURNACE**



**BOD / COD INCUB.**



**POLARIMETER**



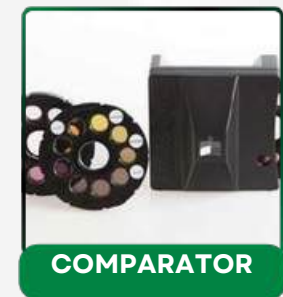
**MAGNIFER**



**WEATHER STATION**



**SILICON TUBING**



**COMPARATOR**



**PARAFILM**



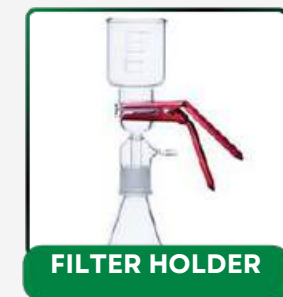
**VACCUM PUMP**



**HEATING MANTEL**



**HOT PLATE**



**FILTER HOLDER**

# PHARMA PRODUCTS



**BLOOD ROLLER**



**LAMINAR AIR FLOW**



**MICROSCOPE**



**ORBITAL SHAKER**



**INCUBATORS**



**WATER BATH / STILL**



**AMPOULE**



**ELECTROPHORESIS**



**AUTOCLAVE**



**CAPSULE FILLING**



**HEMATOLOGY**



**TABLET HARDNESS**



**PFIZER HARDNESS**



**PCR**



**HOMOGENISER**



**MICROPIPETTE**



**TABLET MAKING**



**TABLET PUNCHING**



**TABLET COATING**



**TRAY DRYER**



**UV CABINET**



**SIEVE SHAKER**



**STAGE/OCCULAR**



**BALL MILL**



**COD DIGESTOR**



**IR MOISTURE  
BALANCE**



**TLC**



**TISSUE FLOTATION**



**OIL / WAX BATH**



**ULTRA SONIC**

# GENERAL PRODUCTS



HTC 1 & 2



PH INDICATOR PAPER



HYDROMETER



BLOOD CELL COUNTER



RBC / WBC



ERMA 035



WOOD MOSITURE



MAX - MIN



HUMAN MODELS



OIL / WATER PASTE



DTM 902 / JR7



MULTISTEM



TEST KITS



MILK TESTING



FRIDGE THERMO



DPD TABLETS



GRATINGS



AIR QUALITY



ELECTRODES



LININ TESTER



COATING THICKNESS



INFRA BALANCE



SAFFRON BALANCE



CUVETTE



CENTRIFUGE



+91 96262 97366

+91 73387 21875



[yspscientific@gmail.com](mailto:yspscientific@gmail.com)

[sales.yspscientific@gmail.com](mailto:sales.yspscientific@gmail.com)



B: 25 G1, Ground Floor, #7/10 Annai  
Avanthika Vengaivasal, Chennai - 600100